

State of Wyoming Corner Record

(In compliance with the CORNER PERPETUATION AND FILING ACT, Wyoming Statutes, 1997 Section 33-29-140 et. seq., and the Rules and Regulations of the Board of Professional Engineers and Professional Land Surveyors)

Reverse side of this form may be used if more space is needed.

Record of original survey and citation of source of historical information (if corner is lost or obliterated). Description of corner monumentation evidence found and/or monument and accessories established to perpetuate the location of this corner. Sketch of relative location of monument, accessories, and reference points with course and distance to adjacent corner(s) (if determined in this survey). Method and rationale for reestablishment of lost or obliterated corner.

G.L.O. RECORD:

VARIATION 15°27'E
 "FROM THE CORNER TO SECTIONS
 33 & 34, T15N AND SECTIONS 3 & 4,
 T14N, I RUN S89°51'E ALONG THE
 SOUTH BOUNDARY OF SECTION 34
 80.00 CHAINS AND SET A
 LIMESTONE 18"X12"X8" FOR THE
 CORNER TO SECTIONS
 34, 35, 2 & 3".

AT THE CORNER:

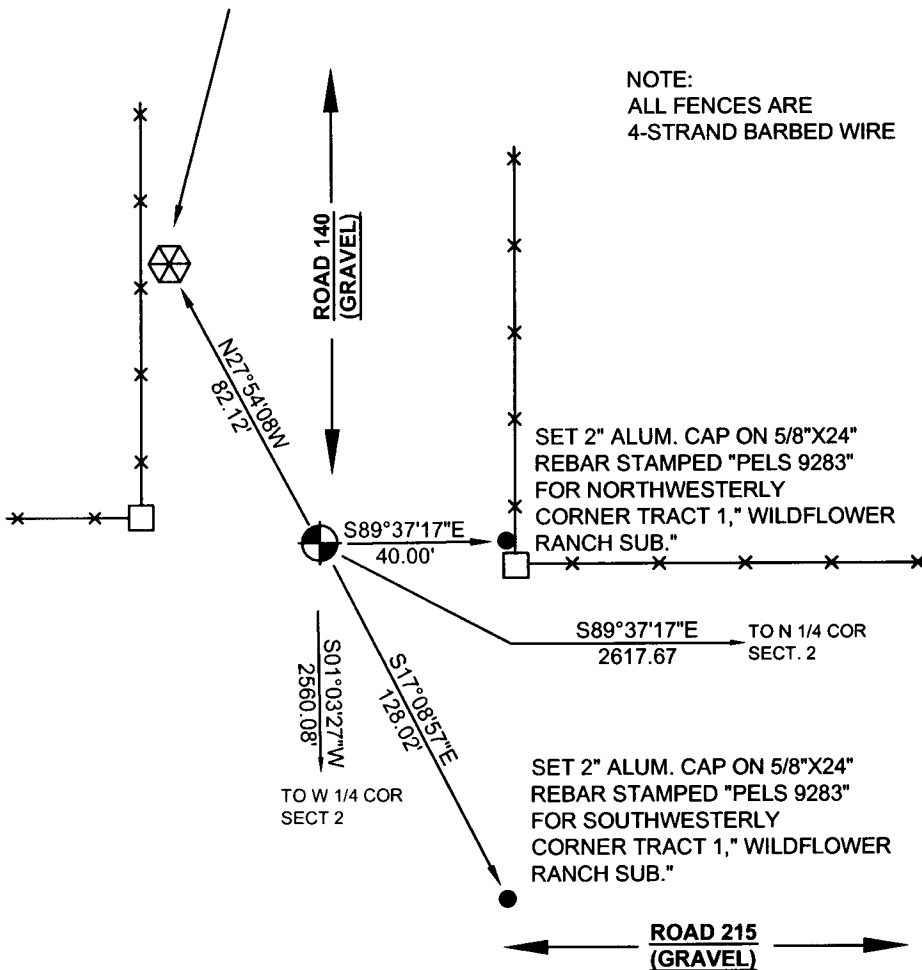
FOUND NOTHING. SET A 2 1/2"
 ALUMINUM CAP ON A 5/8"X24"
 REBAR 0.5' BELOW THE SURFACE
 OF A GRAVEL ROAD STAMPED AS
 SHOWN.

CORNER WAS RE-ESTABLISHED
 USING THE EASTERLY AND
 WESTERLY RIGHT-OF-WAY
 FENCES OF ROAD # 140 (ALSO
 KNOWN AS ROAD # 107) AND THE
 EXISTING MONUMENTS (AND
 FENCES) BETWEEN TOWNSHIP 14
 NORTH AND TOWNSHIP 15 NORTH,
 RANGE 64 WEST, 6th PM. ALL
 MONUMENTS FOUND ON SAID
 TOWNSHIP LINE ARE LOCATED IN
 THIS FENCE. THE POSITION OF
 SAID SECTION CORNER WAS
 FURTHER VERIFIED USING A MAP
 SHOWING COUNTY ROAD 107
 (ROAD # 140) DATED APRIL, 1929
 AND FIELD NOTES TAKEN DURING
 A COUNTY ROAD SURVEY BY THE
 LARAMIE COUNTY ENGINEER'S
 OFFICE LOCATED IN FIELD BOOK #
 23, PAGE 77, DATED MARCH, 1929
 PERTAINING TO SAID COUNTY
 ROAD SURVEY. UNION PACIFIC
 RAILROAD DRAWING # 20798,
 DATED OCTOBER, 1919 WAS ALSO
 USED IN THE VERIFICATION OF
 MONUMENT LOCATION.

FD. GRANITE STONE WITH "1/4" CARVED
 ON THE WEST SIDE (NOT ACCEPTED BY THIS SURVEY).
 FD A 2 1/2" ALUM CAP ON A 5/8"X24" REBAR
 0.3' ABOVE THE SURFACE OF THE GROUND
 STAMPED "LS 9063" COR TO SECTIONS
 34 & 35, T15N AND SECTIONS 2 & 3, T14N
 (NOT ACCEPTED BY THIS SURVEY)



NOTE:
 ALL FENCES ARE
 4-STRAND BARBED WIRE



Date of Field Work: 01/26/09

Office Reference: HENDRICKSON

Cross Index Plat

	1	2	3	4	5	6	7	8	9	10	11	12	13	14	15	16	17	18	19	20	21	22	23	24	25
A	+	+	+	+	+	+	+	+	+	+	+	+	+	+	+	+	+	+	+	+	+	+	+	+	+
B	+	+	+	+	+	+	+	+	+	+	+	+	+	+	+	+	+	+	+	+	+	+	+	+	+
C	+	+	+	+	+	+	+	+	+	+	+	+	+	+	+	+	+	+	+	+	+	+	+	+	+
D	+	+	+	+	+	+	+	+	+	+	+	+	+	+	+	+	+	+	+	+	+	+	+	+	+
E	+	+	+	+	+	+	+	+	+	+	+	+	+	+	+	+	+	+	+	+	+	+	+	+	+
F	+	+	+	+	+	+	+	+	+	+	+	+	+	+	+	+	+	+	+	+	+	+	+	+	+
G	+	+	+	+	+	+	+	+	+	+	+	+	+	+	+	+	+	+	+	+	+	+	+	+	+
H	+	+	+	+	+	+	+	+	+	+	+	+	+	+	+	+	+	+	+	+	+	+	+	+	+
I	+	+	+	+	+	+	+	+	+	+	+	+	+	+	+	+	+	+	+	+	+	+	+	+	+
J	+	+	+	+	+	+	+	+	+	+	+	+	+	+	+	+	+	+	+	+	+	+	+	+	+
K	+	+	+	+	+	+	+	+	+	+	+	+	+	+	+	+	+	+	+	+	+	+	+	+	+
L	+	+	+	+	+	+	+	+	+	+	+	+	+	+	+	+	+	+	+	+	+	+	+	+	+
M	+	+	+	+	+	+	+	+	+	+	+	+	+	+	+	+	+	+	+	+	+	+	+	+	+
N	+	+	+	+	+	+	+	+	+	+	+	+	+	+	+	+	+	+	+	+	+	+	+	+	+
O	+	+	+	+	+	+	+	+	+	+	+	+	+	+	+	+	+	+	+	+	+	+	+	+	+
P	+	+	+	+	+	+	+	+	+	+	+	+	+	+	+	+	+	+	+	+	+	+	+	+	+
Q	+	+	+	+	+	+	+	+	+	+	+	+	+	+	+	+	+	+	+	+	+	+	+	+	+
R	+	+	+	+	+	+	+	+	+	+	+	+	+	+	+	+	+	+	+	+	+	+	+	+	+
S	+	+	+	+	+	+	+	+	+	+	+	+	+	+	+	+	+	+	+	+	+	+	+	+	+
T	+	+	+	+	+	+	+	+	+	+	+	+	+	+	+	+	+	+	+	+	+	+	+	+	+
U	+	+	+	+	+	+	+	+	+	+	+	+	+	+	+	+	+	+	+	+	+	+	+	+	+
V	+	+	+	+	+	+	+	+	+	+	+	+	+	+	+	+	+	+	+	+	+	+	+	+	+
W	+	+	+	+	+	+	+	+	+	+	+	+	+	+	+	+	+	+	+	+	+	+	+	+	+
X	+	+	+	+	+	+	+	+	+	+	+	+	+	+	+	+	+	+	+	+	+	+	+	+	+
Y	+	+	+	+	+	+	+	+	+	+	+	+	+	+	+	+	+	+	+	+	+	+	+	+	+
Z	+	+	+	+	+	+	+	+	+	+	+	+	+	+	+	+	+	+	+	+	+	+	+	+	+

Firm/Agency, Address

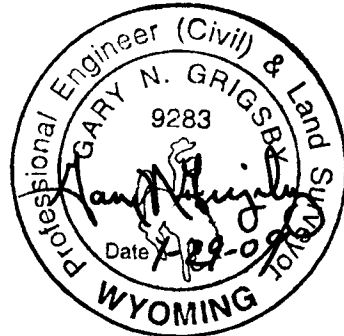
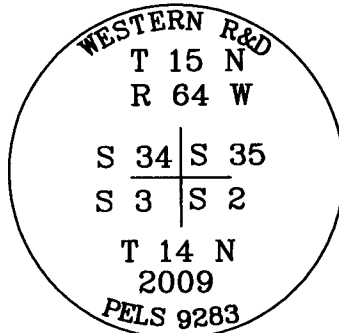
Western R&D, Ltd.
 5809 Yellowstone Rd., Suite B
 Cheyenne, Wyoming 82009

This corner record was prepared
 by me or under my direction
 and supervision.

SEAL & SIGNATURE

Telephone Number: (307) 632-5656

● Denotes Monument Set



Corner Name NORTHWEST CORNER Section 2, T 14 N, R 64 W, 6th P.M.

Cross-Index No.: A-17

County: LARAMIE Wyoming

SBRPEPLS/PLSW: March 1994; PLSW January 1998